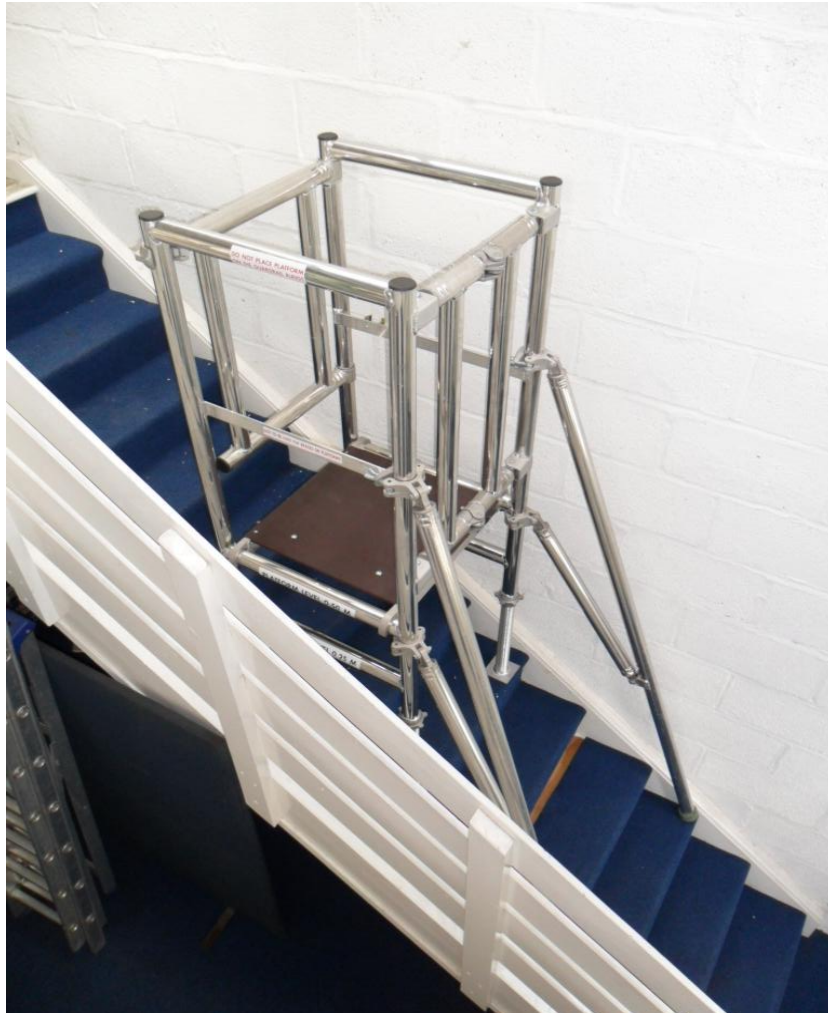


Assembly Guide



- Ensure that all components are present before assembly
- This unit is not designed to take heavy loads
- Please ensure any weight is dispersed as evenly as possible

GENERAL SAFETY RULES

1. Do not use if the product is damaged or has parts missing
2. Do not use on unstable ground such as loose bricks, boxes or blocks
3. Remove all personnel and materials before moving the unit.
4. Do not over reach and do not move the unit by pulling yourself along whilst on the platform.
5. Do not gain extra height by using boxes, ladders etc on the platform.
6. If there is an overhead hazard use head protection
7. Do not over load the unit
8. Do not overreach out of the unit
9. Engage all stabilizers before use.

SWL 150KG

Assembly Guide

Stage 1 KIT LIST:

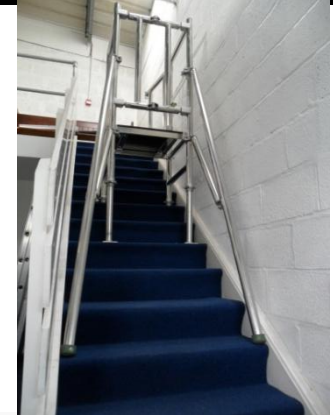
STAIR POD 500 Base Unit
2 x KALS
2 x KALL
1 x STAIR POD PLATFORM



Stage 2

KIT LIST:

2 x MPST STABILIZER
1 x SFHB STEP BRACE



PART A

1) Open Base out and lock folding section.

2) Extend Legs at folding section end in preparation for placement on stairs.

3) Hold unit as shown and place on stairs.

4) Place Platform on required level.

5) Then level out unit using the adjustable legs.

6) Fit the Stabilizers to each side of the unit at the folding section end.

7) When entering unit please ensure you close the gate

Please note when using the unit on a landing or level surface, you must use a step brace on the rung below when the platform is on the 0.5 level to ensure correct stepping distance

Advice:

Ensure that the stabilizers are placed and locked in the correct positions before use

